

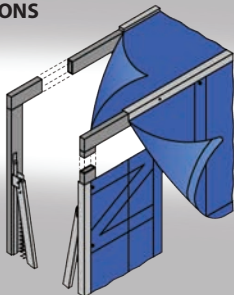
## *Spring loaded side panels retract to provide a tight seal*

Designed for door openings up to 10'W x 10'H, the Series RS501 is designed to retract upon impact. The RS501's collapsible scissor arms are spring loaded, keeping the shelter in a projected position. When compressed by an incoming trailer the panels create an air tight seal. The series RS501 is very effective where the driveway approach is difficult. The series RS501 creates a tight seal that blocks out foul weather, insects, dust and dirt, while saving money on energy costs. A large selection of tough abrasion resistant fabrics makes this unit an excellent long lasting investment. Truck shelters help productivity by increasing safety, protecting personnel, products and equipment.

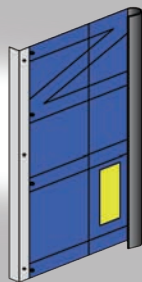
- Series RS501 standard dimensions for door openings 10'W x 10'H or 11'6"W x 11'H (O.D.) x 24" projection with 21" wide vertical panels and a 36" drop header panel.
- Seals trailers from 11'6" to 13'6" high from grade with a dock height of 48". Also seals trailers with widths from 8' W.
- A larger selection of cover fabrics are available fabrics
- Can be designed to suit a large variety of oversized door openings, heights, widths and/or dock projections.
- 18"-20" projection in front of the dock bumper face is recommended to provide a proper seal.



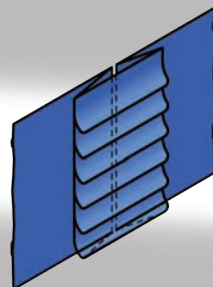
### OPTIONS



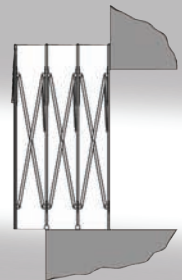
Tubular Steel Frame



Super Snug

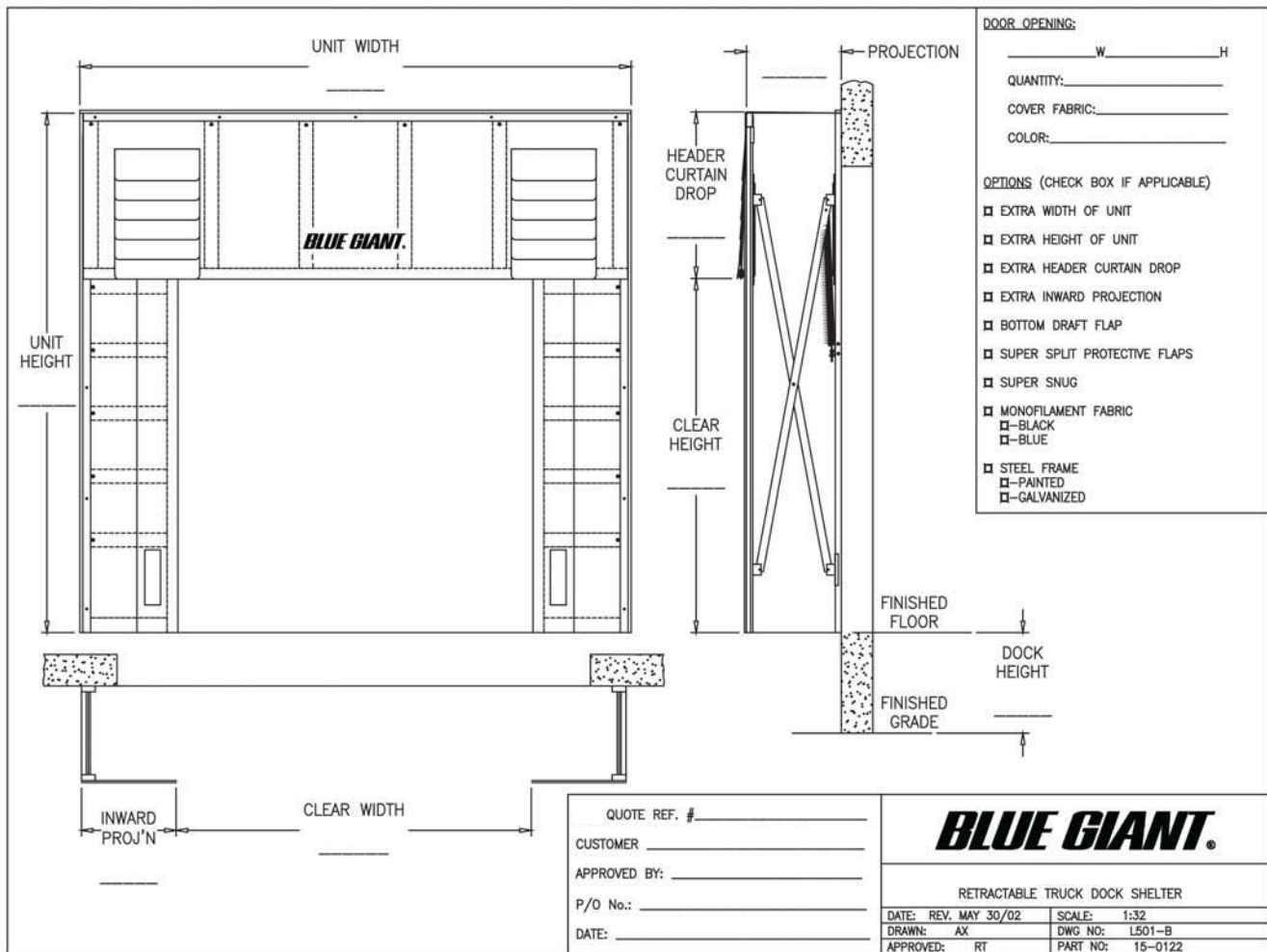


Super Split Protective Flaps



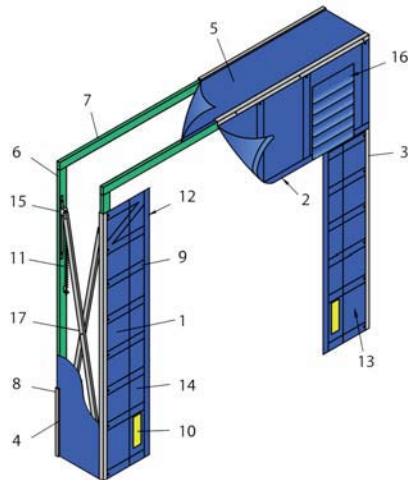
Extended Projections

# Specifications



Retractable truck dock shelter(s) to be Series RS501 as manufactured by Blue Giant Brampton, Ontario, Canada  
Retractable truck dock shelter(s) to be manufactured to fit door opening size(s) \_\_\_\_\_ ft. wide x \_\_\_\_\_ ft. high.

1. Vertical Panels
2. Header Panel
3. Angle Trim
4. "U" Bracket
5. Perimeter Fabric
6. 2" x 4" Vertical pressure treated wood frame
7. 2" x 4" Header pressure treated wood frame
8. Trim
9. Fiberglass Stays
10. 4" Yellow Guide Stripe
11. Spring
12. Foam Bead
13. Cover fabric
14. Double Ply of Fabric on Impact Area
15. Sliding Bracket
16. Protective Flaps
17. Scissor Extension Arm



85 Heart Lake Road South  
Brampton, Ontario, Canada L6W 3K2  
Phone: 905-457-3900 - Fax: 905-457-2313  
www.BlueGiant.com

AUTHORIZED DISTRIBUTOR

BLUE GIANT EQUIPMENT CORPORATION

BLUE GIANT offers a full line of Dock Levelers, Dock Safety Equipment, Accessories, Ergonomic and Scissor Lift Equipment and Industrial Trucks. Concurrent with our continuing product improvement program, specifications are subject to change without notice. Please contact BLUE GIANT for latest information. Some features illustrated may be optional in certain market areas.